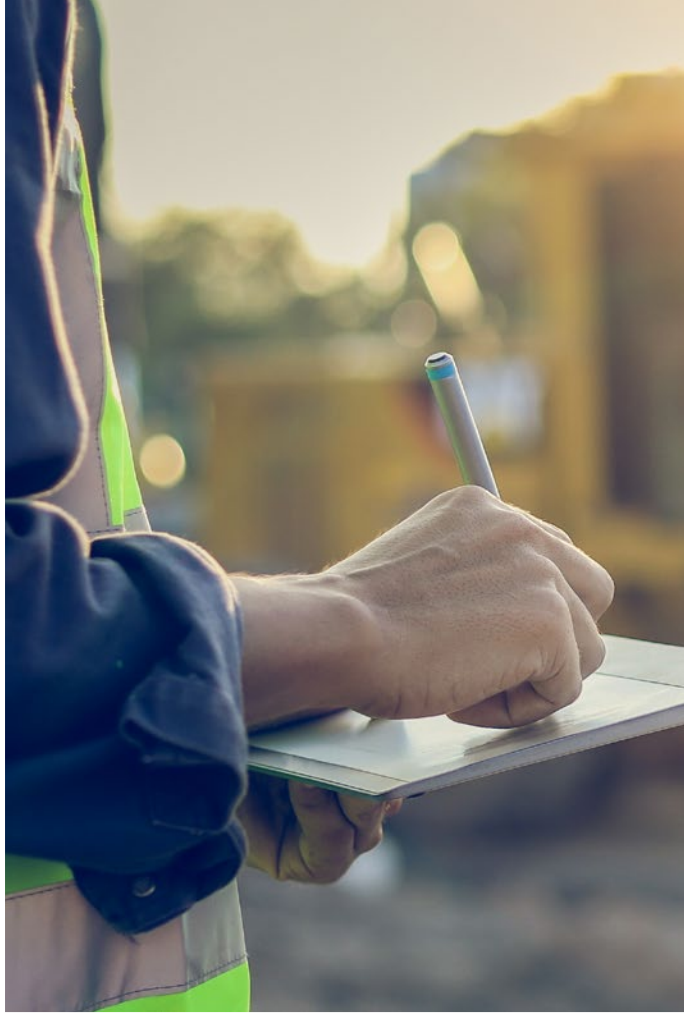


# A systems approach to safety.

PUBLIC SAFETY, PUBLIC ADMINISTRATION, BUSINESS & MANAGEMENT CASE STUDY

AS/NZS ISO 45001:2018,  
*Occupational health and safety management systems – Requirements with guidance for use*



Reflecting on times when we have taken precautions in our own lives, we often conjure up strapping a helmet on pre-bike ride or putting proper shoes on for a bushwalk. Standards have long been increasing safety in the background, but the publicity of AS/NZS ISO 45001:2018, *Occupational health and safety management systems – Requirements with guidance for use* has thrust this more methodical approach to safety into the public eye.

This standard is likely not to be used by the everyday Australian,

**Rather the publication is aimed at the safety managers in a workplace**

in responding to safety risks regardless of industry or size of the organisation.

According to [Safe Work Australia](#), 3,414 workers have died from 2003 to 2016. Startling statistics by any measure, however it is the scope of tasks and representation in these statistics by each industry and sector that is more concerning. The fact that every sector has a number of serious injuries, if not fatalities, proves how standards such as ISO 45001 play a crucial role in every organisation.

**At a high level, this standard outlines the requirements for an organisational management system to manage occupational health and safety.**

Of most importance, this standard outlines the significance of having everyone within an organisation to be involved in effectively managing risk of harm, injury or death associated with work.

*But what does it really do?*

It has been developed to be applicable to any organisation regardless of its size, type or its activities. It is applicable to the occupational health and safety risks under the organisation's control, taking into account factors such as the context in which the organisation operates and the needs and expectations of its workers and other interested parties.

